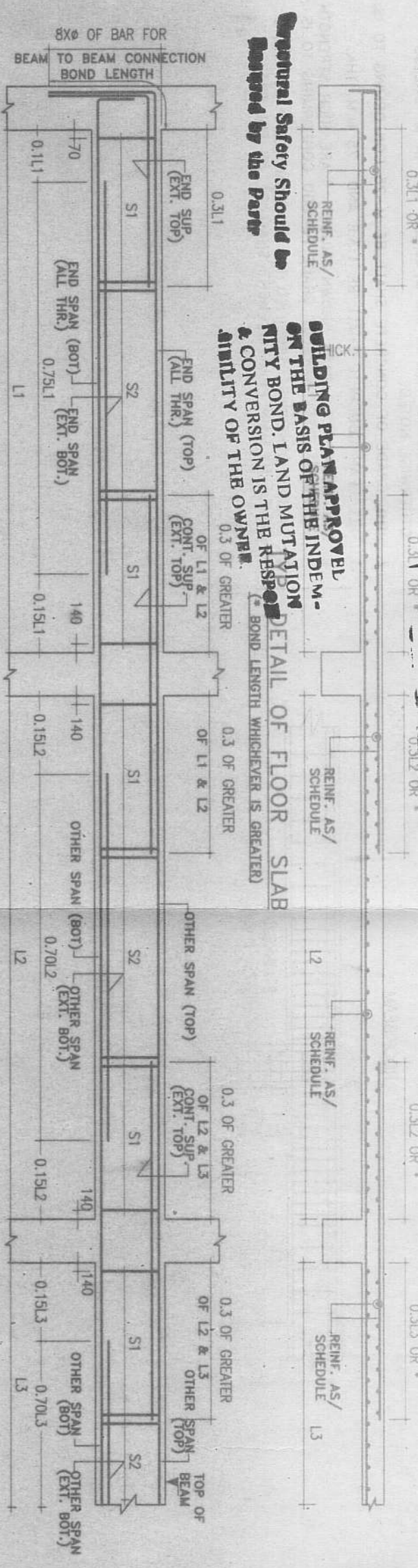




PLAN No. (6) (37) / 12  
 RBJ/CR/18/18/19/20  
 APN 2017 30 18  
 Date 30.11.2017

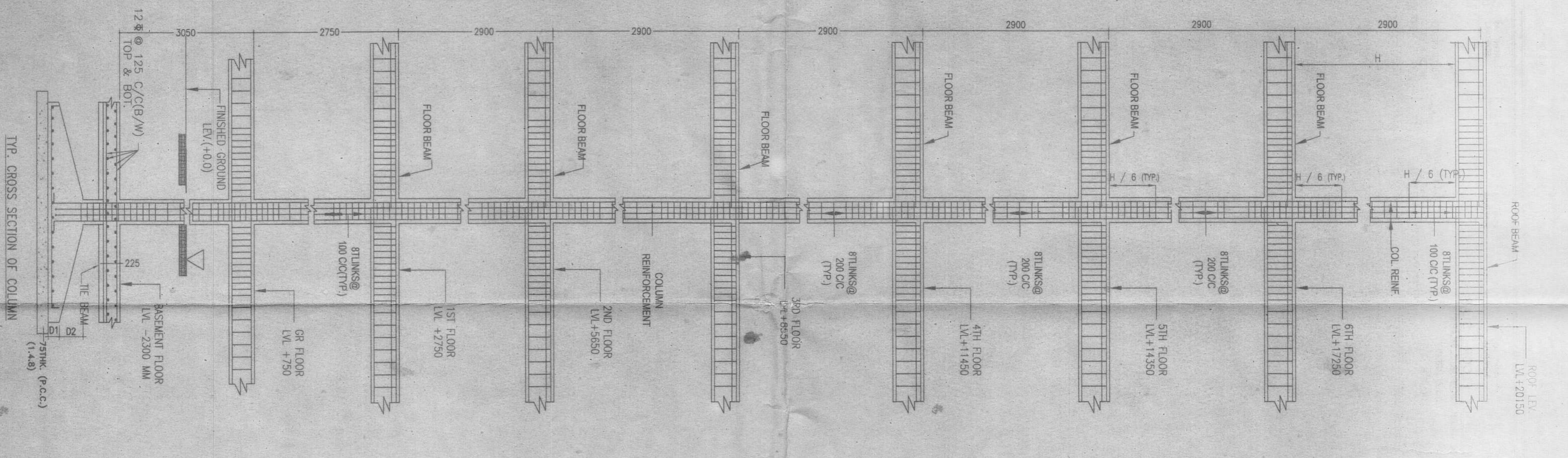
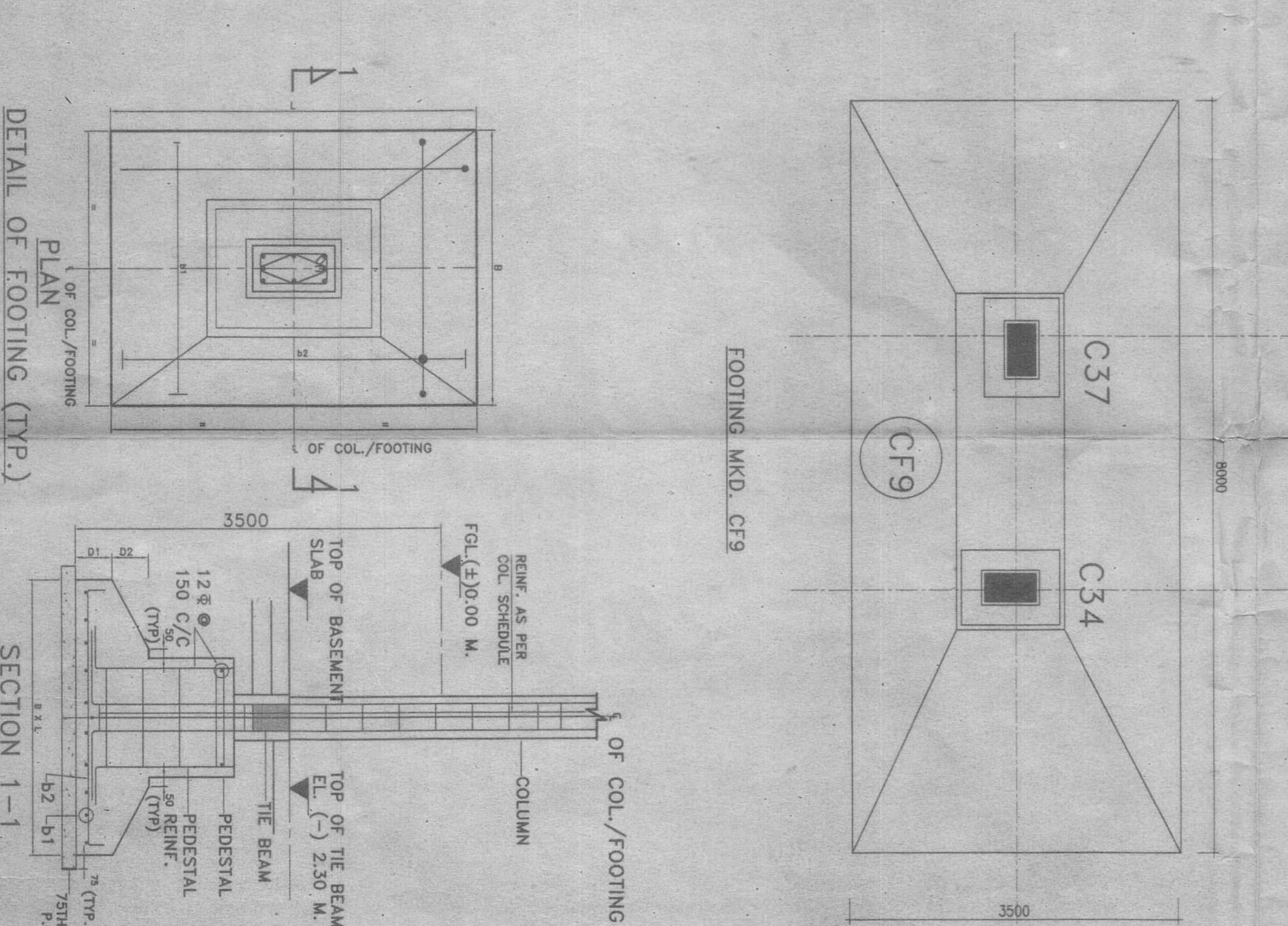
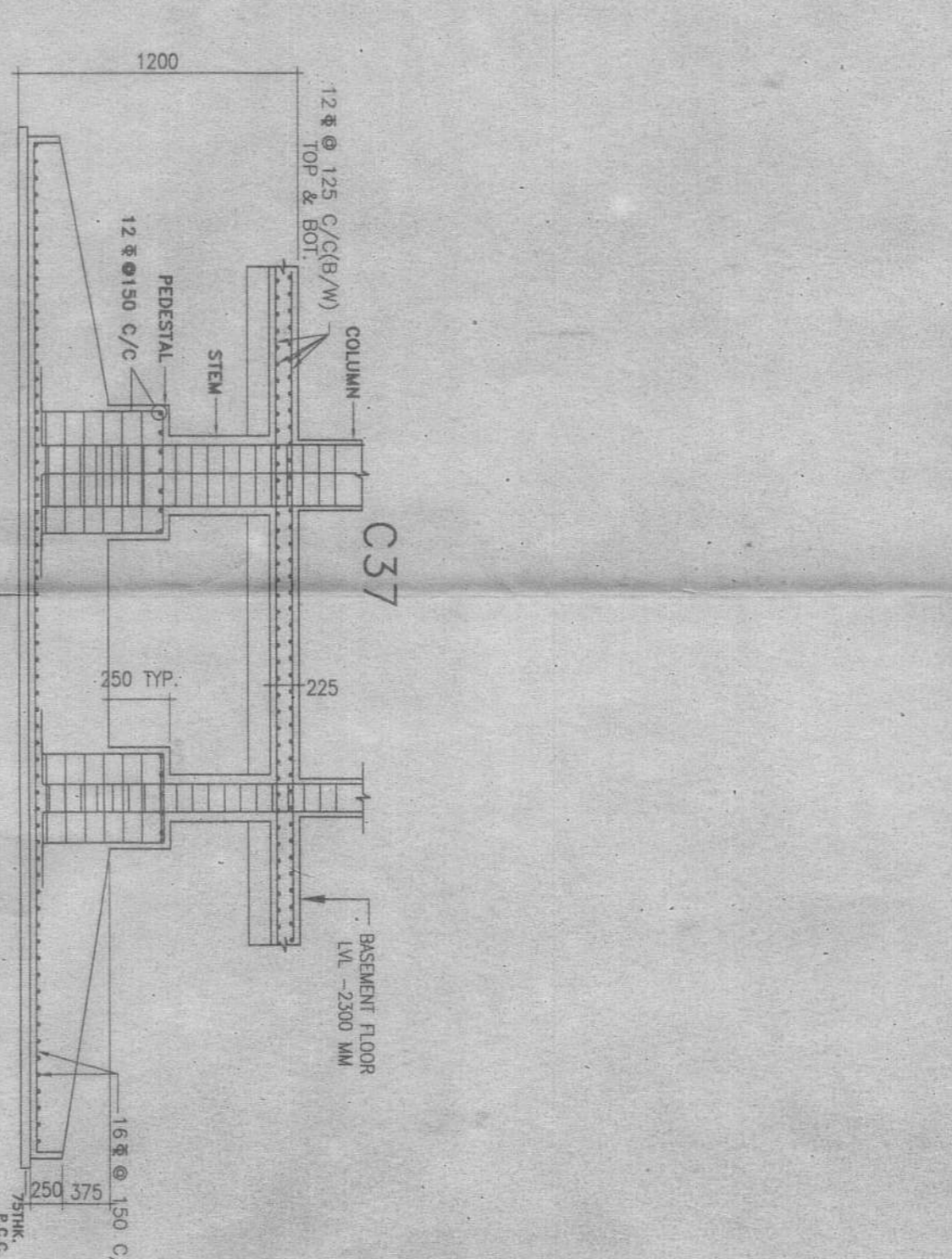
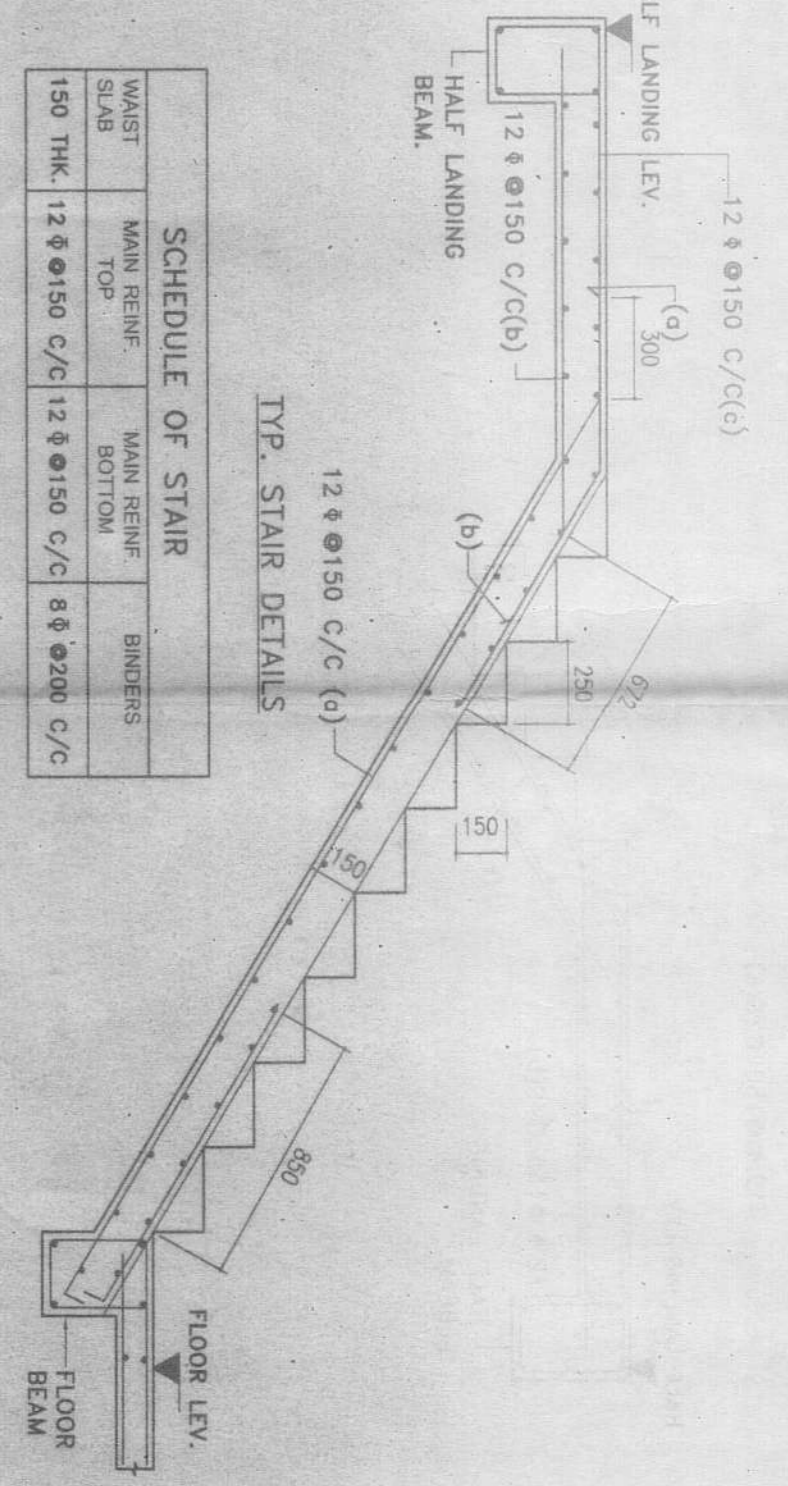


Commissioner  
 Durgapur Municipal Corporation

Partner in Charge, Building Plan  
 Durgapur Municipal Corporation

SCHEDULE OF COLUMNS

COL. MKD.	FOUND. TO 2ND FL. LEV.	2ND FL. TO 3RD FL. LEV.	3RD FL. TO 5TH FL. LEV.	5TH FL. TO ROOF LEV.	ABOVE ROOF LEV.
C1	8 @ 20 @ 100/200 C/C (2) CLOSED+1 OPEN LINKS/SET	8 @ 20 @ 100/200 C/C (2) CLOSED+1 OPEN LINKS/SET	8 @ 20 @ 100/200 C/C (2) CLOSED+1 OPEN LINKS/SET	8 @ 20 @ 100/200 C/C (2) CLOSED+1 OPEN LINKS/SET	8 @ 20 @ 100/200 C/C (2) CLOSED+1 OPEN LINKS/SET
C2, C4, C11	8 @ 20 @ 100/200 C/C (2) CLOSED+1 OPEN LINKS/SET	8 @ 20 @ 100/200 C/C (2) CLOSED+1 OPEN LINKS/SET	8 @ 20 @ 100/200 C/C (2) CLOSED+1 OPEN LINKS/SET	8 @ 20 @ 100/200 C/C (2) CLOSED+1 OPEN LINKS/SET	8 @ 20 @ 100/200 C/C (2) CLOSED+1 OPEN LINKS/SET
C20, C23	8 @ 20 @ 100/200 C/C (2) CLOSED+1 OPEN LINKS/SET	8 @ 20 @ 100/200 C/C (2) CLOSED+1 OPEN LINKS/SET	8 @ 20 @ 100/200 C/C (2) CLOSED+1 OPEN LINKS/SET	8 @ 20 @ 100/200 C/C (2) CLOSED+1 OPEN LINKS/SET	8 @ 20 @ 100/200 C/C (2) CLOSED+1 OPEN LINKS/SET
C3, C5, C7	8 @ 20 @ 100/200 C/C (2) CLOSED+1 OPEN LINKS/SET	8 @ 20 @ 100/200 C/C (2) CLOSED+1 OPEN LINKS/SET	8 @ 20 @ 100/200 C/C (2) CLOSED+1 OPEN LINKS/SET	8 @ 20 @ 100/200 C/C (2) CLOSED+1 OPEN LINKS/SET	8 @ 20 @ 100/200 C/C (2) CLOSED+1 OPEN LINKS/SET
C8, C9, C18	8 @ 20 @ 100/200 C/C (2) CLOSED+1 OPEN LINKS/SET	8 @ 20 @ 100/200 C/C (2) CLOSED+1 OPEN LINKS/SET	8 @ 20 @ 100/200 C/C (2) CLOSED+1 OPEN LINKS/SET	8 @ 20 @ 100/200 C/C (2) CLOSED+1 OPEN LINKS/SET	8 @ 20 @ 100/200 C/C (2) CLOSED+1 OPEN LINKS/SET
C32, C33, C34	8 @ 20 @ 100/200 C/C (2) CLOSED+1 OPEN LINKS/SET	8 @ 20 @ 100/200 C/C (2) CLOSED+1 OPEN LINKS/SET	8 @ 20 @ 100/200 C/C (2) CLOSED+1 OPEN LINKS/SET	8 @ 20 @ 100/200 C/C (2) CLOSED+1 OPEN LINKS/SET	8 @ 20 @ 100/200 C/C (2) CLOSED+1 OPEN LINKS/SET
C36, C40, C48	8 @ 20 @ 100/200 C/C (2) CLOSED+1 OPEN LINKS/SET	8 @ 20 @ 100/200 C/C (2) CLOSED+1 OPEN LINKS/SET	8 @ 20 @ 100/200 C/C (2) CLOSED+1 OPEN LINKS/SET	8 @ 20 @ 100/200 C/C (2) CLOSED+1 OPEN LINKS/SET	8 @ 20 @ 100/200 C/C (2) CLOSED+1 OPEN LINKS/SET
C56, C61, C63	8 @ 20 @ 100/200 C/C (2) CLOSED+1 OPEN LINKS/SET	8 @ 20 @ 100/200 C/C (2) CLOSED+1 OPEN LINKS/SET	8 @ 20 @ 100/200 C/C (2) CLOSED+1 OPEN LINKS/SET	8 @ 20 @ 100/200 C/C (2) CLOSED+1 OPEN LINKS/SET	8 @ 20 @ 100/200 C/C (2) CLOSED+1 OPEN LINKS/SET
C6, C16, C22	8 @ 20 @ 100/200 C/C (2) CLOSED+1 OPEN LINKS/SET	8 @ 20 @ 100/200 C/C (2) CLOSED+1 OPEN LINKS/SET	8 @ 20 @ 100/200 C/C (2) CLOSED+1 OPEN LINKS/SET	8 @ 20 @ 100/200 C/C (2) CLOSED+1 OPEN LINKS/SET	8 @ 20 @ 100/200 C/C (2) CLOSED+1 OPEN LINKS/SET
C23, C26, C27	8 @ 20 @ 100/200 C/C (2) CLOSED+1 OPEN LINKS/SET	8 @ 20 @ 100/200 C/C (2) CLOSED+1 OPEN LINKS/SET	8 @ 20 @ 100/200 C/C (2) CLOSED+1 OPEN LINKS/SET	8 @ 20 @ 100/200 C/C (2) CLOSED+1 OPEN LINKS/SET	8 @ 20 @ 100/200 C/C (2) CLOSED+1 OPEN LINKS/SET
C28, C37, C42	8 @ 20 @ 100/200 C/C (2) CLOSED+1 OPEN LINKS/SET	8 @ 20 @ 100/200 C/C (2) CLOSED+1 OPEN LINKS/SET	8 @ 20 @ 100/200 C/C (2) CLOSED+1 OPEN LINKS/SET	8 @ 20 @ 100/200 C/C (2) CLOSED+1 OPEN LINKS/SET	8 @ 20 @ 100/200 C/C (2) CLOSED+1 OPEN LINKS/SET
C51, C52, C54	8 @ 20 @ 100/200 C/C (2) CLOSED+1 OPEN LINKS/SET	8 @ 20 @ 100/200 C/C (2) CLOSED+1 OPEN LINKS/SET	8 @ 20 @ 100/200 C/C (2) CLOSED+1 OPEN LINKS/SET	8 @ 20 @ 100/200 C/C (2) CLOSED+1 OPEN LINKS/SET	8 @ 20 @ 100/200 C/C (2) CLOSED+1 OPEN LINKS/SET
C55, C57, C58	8 @ 20 @ 100/200 C/C (2) CLOSED+1 OPEN LINKS/SET	8 @ 20 @ 100/200 C/C (2) CLOSED+1 OPEN LINKS/SET	8 @ 20 @ 100/200 C/C (2) CLOSED+1 OPEN LINKS/SET	8 @ 20 @ 100/200 C/C (2) CLOSED+1 OPEN LINKS/SET	8 @ 20 @ 100/200 C/C (2) CLOSED+1 OPEN LINKS/SET
C59, C60, C62	8 @ 20 @ 100/200 C/C (2) CLOSED+1 OPEN LINKS/SET	8 @ 20 @ 100/200 C/C (2) CLOSED+1 OPEN LINKS/SET	8 @ 20 @ 100/200 C/C (2) CLOSED+1 OPEN LINKS/SET	8 @ 20 @ 100/200 C/C (2) CLOSED+1 OPEN LINKS/SET	8 @ 20 @ 100/200 C/C (2) CLOSED+1 OPEN LINKS/SET
C10, C43	8 @ 20 @ 100/200 C/C (2) CLOSED+1 OPEN LINKS/SET	8 @ 20 @ 100/200 C/C (2) CLOSED+1 OPEN LINKS/SET	8 @ 20 @ 100/200 C/C (2) CLOSED+1 OPEN LINKS/SET	8 @ 20 @ 100/200 C/C (2) CLOSED+1 OPEN LINKS/SET	8 @ 20 @ 100/200 C/C (2) CLOSED+1 OPEN LINKS/SET
C12, C17	8 @ 20 @ 100/200 C/C (2) CLOSED+1 OPEN LINKS/SET	8 @ 20 @ 100/200 C/C (2) CLOSED+1 OPEN LINKS/SET	8 @ 20 @ 100/200 C/C (2) CLOSED+1 OPEN LINKS/SET	8 @ 20 @ 100/200 C/C (2) CLOSED+1 OPEN LINKS/SET	8 @ 20 @ 100/200 C/C (2) CLOSED+1 OPEN LINKS/SET
C15, C14, C19	8 @ 20 @ 100/200 C/C (2) CLOSED+1 OPEN LINKS/SET	8 @ 20 @ 100/200 C/C (2) CLOSED+1 OPEN LINKS/SET	8 @ 20 @ 100/200 C/C (2) CLOSED+1 OPEN LINKS/SET	8 @ 20 @ 100/200 C/C (2) CLOSED+1 OPEN LINKS/SET	8 @ 20 @ 100/200 C/C (2) CLOSED+1 OPEN LINKS/SET
C21, C24, C41	8 @ 20 @ 100/200 C/C (2) CLOSED+1 OPEN LINKS/SET	8 @ 20 @ 100/200 C/C (2) CLOSED+1 OPEN LINKS/SET	8 @ 20 @ 100/200 C/C (2) CLOSED+1 OPEN LINKS/SET	8 @ 20 @ 100/200 C/C (2) CLOSED+1 OPEN LINKS/SET	8 @ 20 @ 100/200 C/C (2) CLOSED+1 OPEN LINKS/SET
C33	8 @ 20 @ 100/200 C/C (2) CLOSED+1 OPEN LINKS/SET	8 @ 20 @ 100/200 C/C (2) CLOSED+1 OPEN LINKS/SET	8 @ 20 @ 100/200 C/C (2) CLOSED+1 OPEN LINKS/SET	8 @ 20 @ 100/200 C/C (2) CLOSED+1 OPEN LINKS/SET	8 @ 20 @ 100/200 C/C (2) CLOSED+1 OPEN LINKS/SET
C15, C29, C30	8 @ 20 @ 100/200 C/C (2) CLOSED+1 OPEN LINKS/SET	8 @ 20 @ 100/200 C/C (2) CLOSED+1 OPEN LINKS/SET	8 @ 20 @ 100/200 C/C (2) CLOSED+1 OPEN LINKS/SET	8 @ 20 @ 100/200 C/C (2) CLOSED+1 OPEN LINKS/SET	8 @ 20 @ 100/200 C/C (2) CLOSED+1 OPEN LINKS/SET
C35, C36, C39	8 @ 20 @ 100/200 C/C (2) CLOSED+1 OPEN LINKS/SET	8 @ 20 @ 100/200 C/C (2) CLOSED+1 OPEN LINKS/SET	8 @ 20 @ 100/200 C/C (2) CLOSED+1 OPEN LINKS/SET	8 @ 20 @ 100/200 C/C (2) CLOSED+1 OPEN LINKS/SET	8 @ 20 @ 100/200 C/C (2) CLOSED+1 OPEN LINKS/SET
C45, C64	8 @ 20 @ 100/200 C/C (2) CLOSED+1 OPEN LINKS/SET	8 @ 20 @ 100/200 C/C (2) CLOSED+1 OPEN LINKS/SET	8 @ 20 @ 100/200 C/C (2) CLOSED+1 OPEN LINKS/SET	8 @ 20 @ 100/200 C/C (2) CLOSED+1 OPEN LINKS/SET	8 @ 20 @ 100/200 C/C (2) CLOSED+1 OPEN LINKS/SET
C31	8 @ 20 @ 100/200 C/C (2) CLOSED+1 OPEN LINKS/SET	8 @ 20 @ 100/200 C/C (2) CLOSED+1 OPEN LINKS/SET	8 @ 20 @ 100/200 C/C (2) CLOSED+1 OPEN LINKS/SET	8 @ 20 @ 100/200 C/C (2) CLOSED+1 OPEN LINKS/SET	8 @ 20 @ 100/200 C/C (2) CLOSED+1 OPEN LINKS/SET
C46, C47	8 @ 20 @ 100/200 C/C (2) CLOSED+1 OPEN LINKS/SET	8 @ 20 @ 100/200 C/C (2) CLOSED+1 OPEN LINKS/SET	8 @ 20 @ 100/200 C/C (2) CLOSED+1 OPEN LINKS/SET	8 @ 20 @ 100/200 C/C (2) CLOSED+1 OPEN LINKS/SET	8 @ 20 @ 100/200 C/C (2) CLOSED+1 OPEN LINKS/SET
LIFT	12 @ 150 @ 100/200 C/C (2) CLOSED+1 OPEN LINKS/SET	12 @ 150 @ 100/200 C/C (2) CLOSED+1 OPEN LINKS/SET	12 @ 150 @ 100/200 C/C (2) CLOSED+1 OPEN LINKS/SET	12 @ 150 @ 100/200 C/C (2) CLOSED+1 OPEN LINKS/SET	12 @ 150 @ 100/200 C/C (2) CLOSED+1 OPEN LINKS/SET



- NOTES
1. ALL DIMENSIONS ARE IN METERS.
  2. THE FINISH OF THE FLOOR IS TO BE AS PER THE ARCHITECT'S DRAWING.
  3. ALL REINFORCEMENT BARS SHALL BE OF 20mm DIA UNLESS OTHERWISE SPECIFIED.
  4. ALL REINFORCEMENT BARS SHALL BE OF 12mm DIA UNLESS OTHERWISE SPECIFIED.
  5. THE NET BEARING PRESSURE FOR FOUNDATION DESIGN HAS BEEN KEPT WITHIN 14.5 T/50. M AT 1.25 M. BELOW GROUND LEVEL.
  6. ALL LAP LENGTHS SHALL BE 50 TIMES DIA OF BARS UNLESS NOTED OTHERWISE.

FOUNDATION LAYOUT PLAN & BEAM LAYOUT PLAN AND SCHEDULE OF FOOTINGS, TIE BEAMS, FLOOR BEAMS, FLOOR SLAB, STAIR, COLUMNS ETC.

TITLE

PROPOSED STRUCTURAL DRAWING OF B+G+1(ONE EXTRA FLOOR) STORED APARTMENT BUILDING (BLOCK-2) OF M/S KIRTI SAI NATH CONSTRUCTION PVT. LTD. OVER R.S. PLOT NO.- 5&6, KHATTIAN NO.-11958 & 11111, L.R. PLOT-4(PART), OF MOUZA-NADIHA, J.L. NO.- 92, P.S.-COCKOVEN, DIST- BURDWAN.

\* HOLDING NO. - 123/N

\* ID NO. - 68784

\* STREET NAME - J.P. AVENUE, DGP-11

SIGNATURE OF OWNER

SIGNATURE OF STRUCTURAL ENGINEER

SIGNATURE OF L.B.S./ENGINEER/ARCHITECT

WVMA SINGH  
 DMC REGISTERED  
 LIC NO. - DMCP/90/80

REV. ON - 27.04.2017

SCALE - 1:100 OR AS SHOWN

DATE - 02.01.14

SHEET NO. - MM/AP/1/2014-01/KRS/51